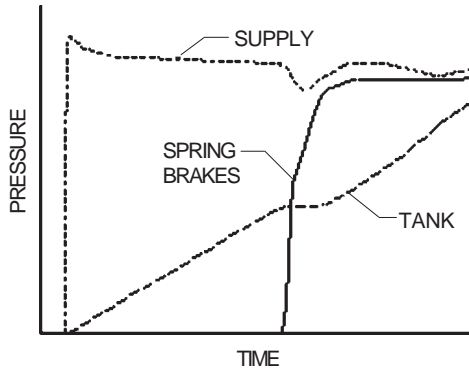




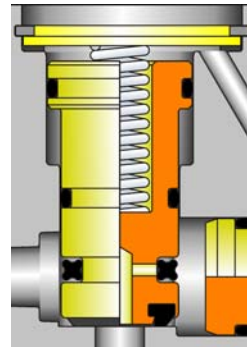
TRAMEC

Product Bulletin

The **TRAMEC STEV**[®] Sensing Trailer Emergency Valve Meets the Requirements of FMVSS 571.121 As They Relate to Trailer Parking Brake and Trailer Air Supply Control Providing "Service Reservoir Priority" Logic



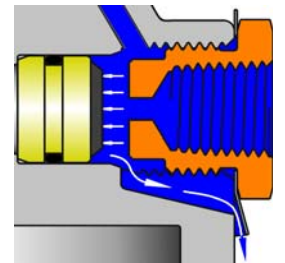
RESERVOIR CHARGING



RESERVOIR SENSOR

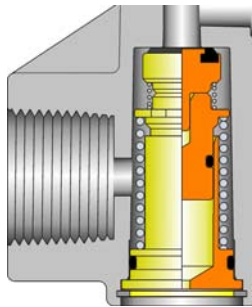
The reservoir sensor section measures the tank pressure and prevents air from flowing into the spring brakes before service braking capability builds in the system.

With Spring Brakes Set, Piston Shifts On Control Application



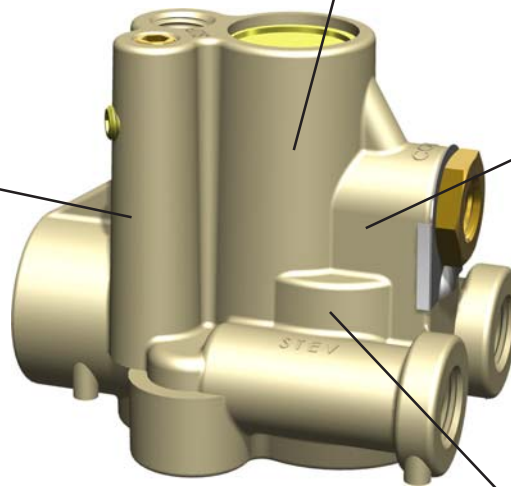
VENTING ANTI-COMPOUNDING

When the Spring Brakes are On, the Control line is Vented to Atmosphere. Prevents false release of Spring Brakes on Doubles; Ejects fluids trapped in Control Lines.



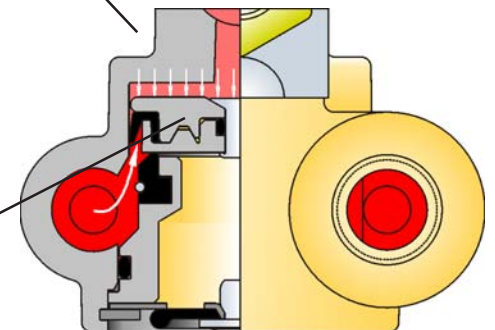
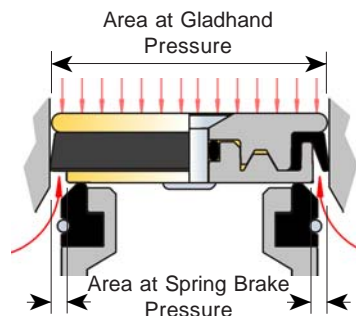
PRESSURE PROTECTION

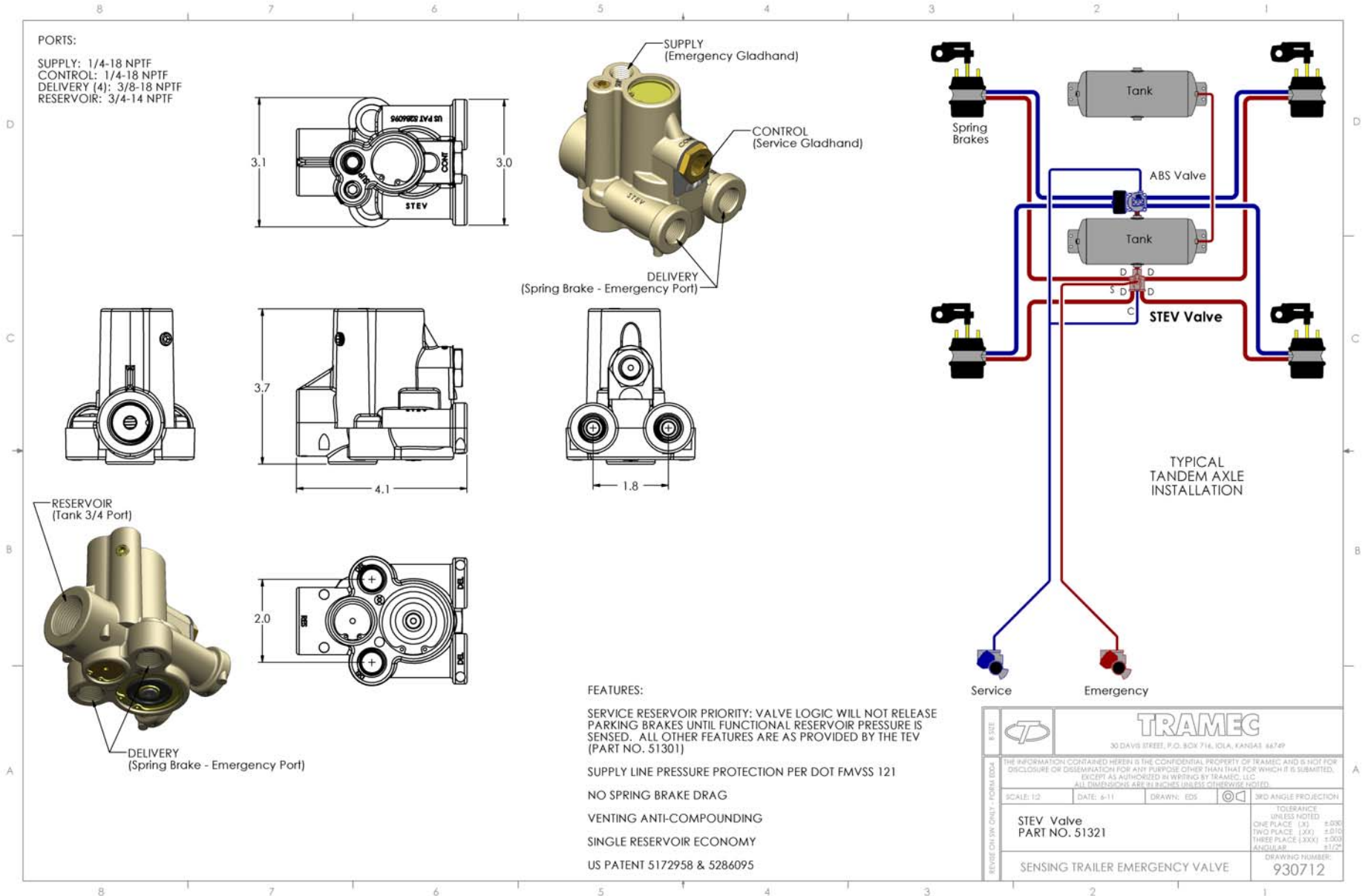
When the supply line pressure exceeds 85 psi, the piston shifts down to allow flow to the tank. The check valve retains tank pressure when the gladhand is vented.



NO SPRING BRAKE DRAG With TEV or STEV Systems

By Design, the Spring Brakes will retain the maximum pressure delivered by the compressor, until the supply gladhand pressure drops to about 35 psi. The effective area of the shuttle at gladhand pressure is about 3 times that of the area exposed to spring brake pressure. Area X Pressure = the Force to Retain or Exhaust the pressure in the spring brakes. (Refer to graphic representation at right)





Replaces: Sealco 110700; Haldex KN26110

TRAMEC, LLC

30 Davis Street, P.O. Box 716, Iola, KS 66749-0716
 Tel: 800-835-0021 or 620-365-6977 Fax: 620-365-3290
 Web: www.tramec.com Email: sales@tramec.com

REVISE OR IN CHARGE		TRAMEC 30 DAVIS STREET, P.O. BOX 716, IOLA, KANSAS 66749		
	THE INFORMATION CONTAINED HEREIN IS THE CONFIDENTIAL PROPERTY OF TRAMEC AND IS NOT FOR DISCLOSURE OR DISSEMINATION FOR ANY PURPOSE OTHER THAN THAT FOR WHICH IT IS SUBMITTED, EXCEPT AS AUTHORIZED IN WRITING BY TRAMEC, LLC. ALL DIMENSIONS ARE IN INCHES UNLESS OTHERWISE NOTED.			SCALE: 1:2 DATE: 6-11 DRAWN: EDS 3RD ANGLE PROJECTION
	STEVE Valve PART NO. 51321			TOLERANCE UNLESS NOTED ONE PLACE (XX) ±0.06 TWO PLACE (XXX) ±0.10 THREE PLACE (LXXX) ±0.001 ANGULAR ±1/2°
	SENSING TRAILER EMERGENCY VALVE			DRAWING NUMBER: 930712